



**CONLEY  
UNIVERSITY**






**INTEGRATE  
RESEARCH WITH  
REAL-WORLD  
STRATEGY.**

## About Us

The job landscape is an ever-changing place. Whether your goal is to be a global leader or to simply advance in your own field; each new day brings new information and evolving best practices in every industry. This is why **Conley University** has developed a unique hands-on curriculum that focuses on real-world's business skills. Our flexible online education program is adjusted to meet the increasing demands of fields like information technology, business, management and healthcare. We also excel at preparing our students to find—and maintain—the job of their dreams.

## CONTACT US

-  +1 (808) 468-3631
-  [info@conleyuniversity.us](mailto:info@conleyuniversity.us)
-  1311 Kapiolani Blvd, Honolulu, HI 96814,  
United States

CONLEY AMERICAN UNIVERSITY IS NOT ACCREDITED BY AN ACCREDITING AGENCY RECOGNIZED BY THE UNITED STATES SECRETARY OF EDUCATION.

Note: In the United States, many licensing authorities require accredited degrees as the basis for eligibility for licensing. In some cases, accredited colleges may not accept for transfer courses and degrees completed at unaccredited colleges, and some employers may require an accredited degree as a basis for eligibility for employment.

# Doctorate in Business Administration (DBA)

[www.conleyuniversity.us](http://www.conleyuniversity.us)

## Program Details

In a competitive and rapidly evolving global market, strategic leadership grounded in research and innovation is more vital than ever. Conley University's Doctorate in Business Administration (DBA) is designed for ambitious professionals seeking to elevate their expertise, influence organizational success, and drive meaningful change at the executive level.

## Innovative & Research-Driven Curriculum

- Our DBA program is ideal for experienced managers, entrepreneurs, and business leaders who want to deepen their knowledge and sharpen their decision-making through evidence-based research. In this program, you will:
- Analyze complex business challenges using advanced research methods
- Explore cutting-edge topics such as corporate governance, global markets, and innovation management
- Contribute original research to the field of business administration.

## Comprehensive Program Overview

### ✓ Fast

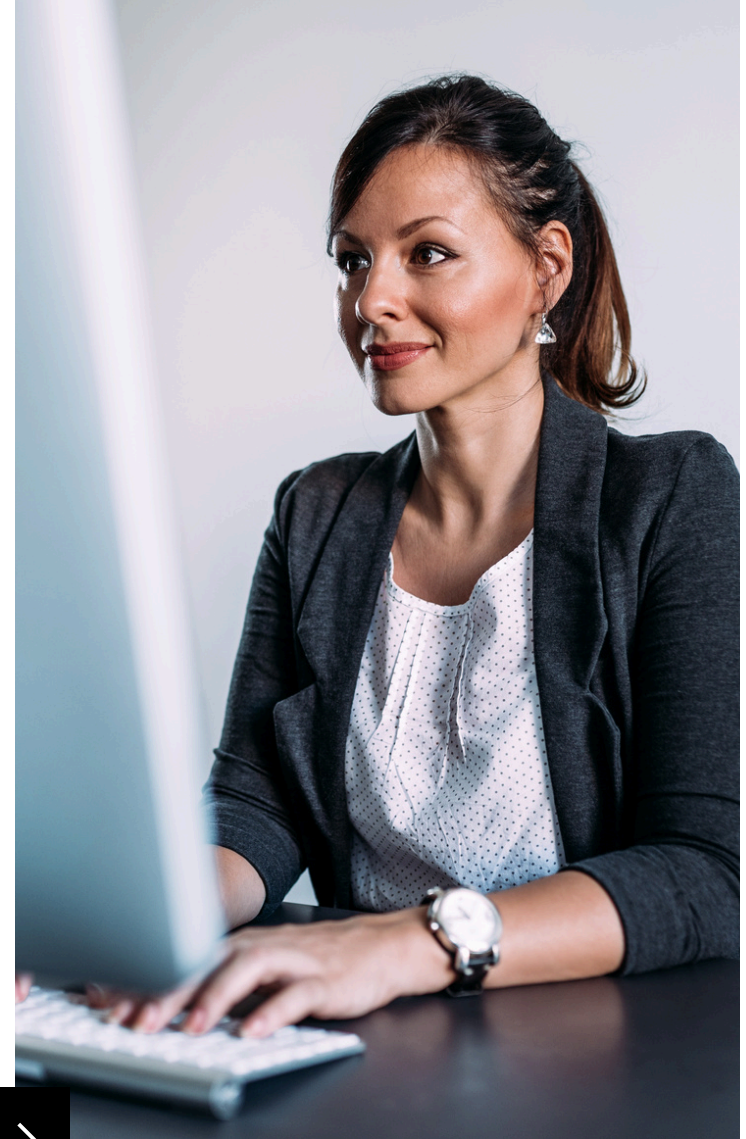
Each semester spans 90 calendar days.

### ✓ Credits

Earn 12 credits for each course completed.

### ✓ Assessment

Assess your knowledge through online final assessments.



Drift into success  
with Conley  
University!



**REGISTER NOW**

